



Pocket 420



PRE-FAB INNOVATIONS

innovation that transforms lives



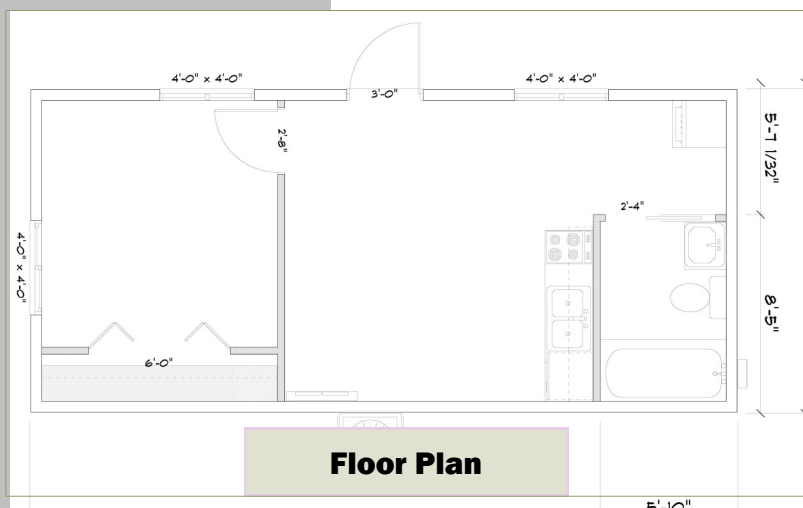
**One Bedroom,
One Bath Home**

Includes

- One 11'X12' Bedroom
- Open Kitchen and Living area
- Vaulted Ceilings
- Low-E Windows Throughout
- Solar Included
- Mini-Split HVAC
- Heat Pump Water Heater
- LED Lighting
- Ceiling Fan

Meet our Pocket 420

This modular factory-built home is built to CA Title 24 building code comes with solar, a mini-split HVAC and LED Lighting. This little pocket home spans 14 ft by 30 ft with vaulted ceilings that make it feel grand! Large windows and sliding glass entry give opportunity for an indoor/outdoor space with the minor addition of a patio. This pocket home is perfect as a granny suite, a place for your kid to finally leave the house or a man-cave, she shed or craft studio. What will you do with your Pocket 420?



Floor Plan

Available Options

- Elongated Toilets
- LED Can Lights
- Cabinet Upgrades
- Upgraded Carpet
- Cast Iron Sink
- Built-in cabinets
- Kitchen Arrangement Options

